



# Protek A734

## 4.4GHz Handheld Spectrum Analyzer

Protek is ready to provide you with good solution and good service that you need anytime and anywhere.

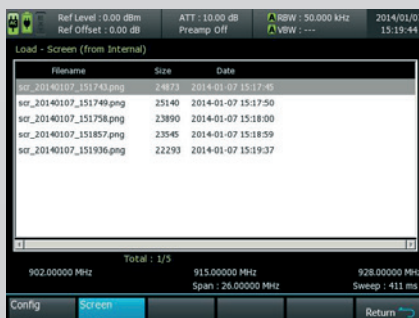
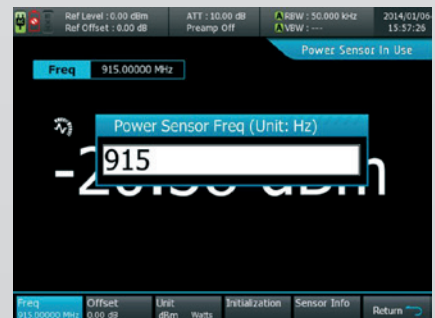
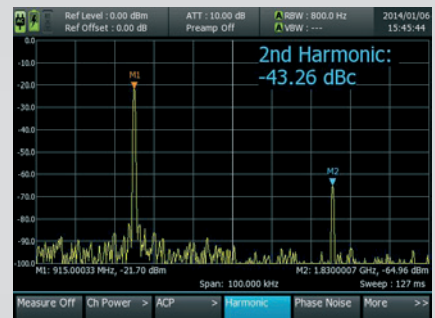
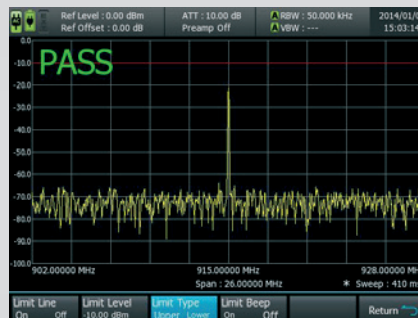
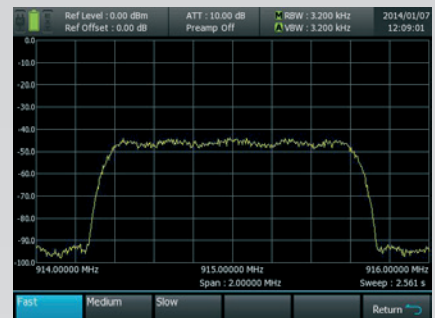
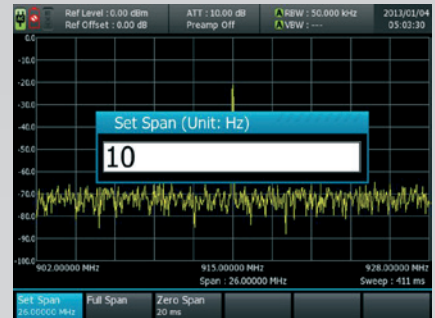
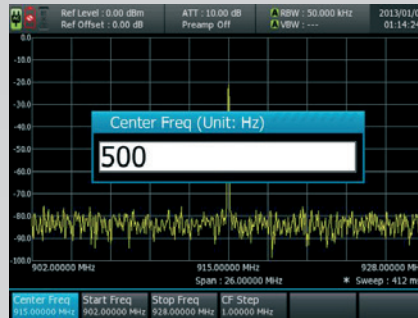
- ▶ The Economical Solution
- ▶ Ideal for Field Testing
- ▶ Lightweight and Easy-to-use



# Protek A734 4.4GHz Handheld Spectrum Analyzer

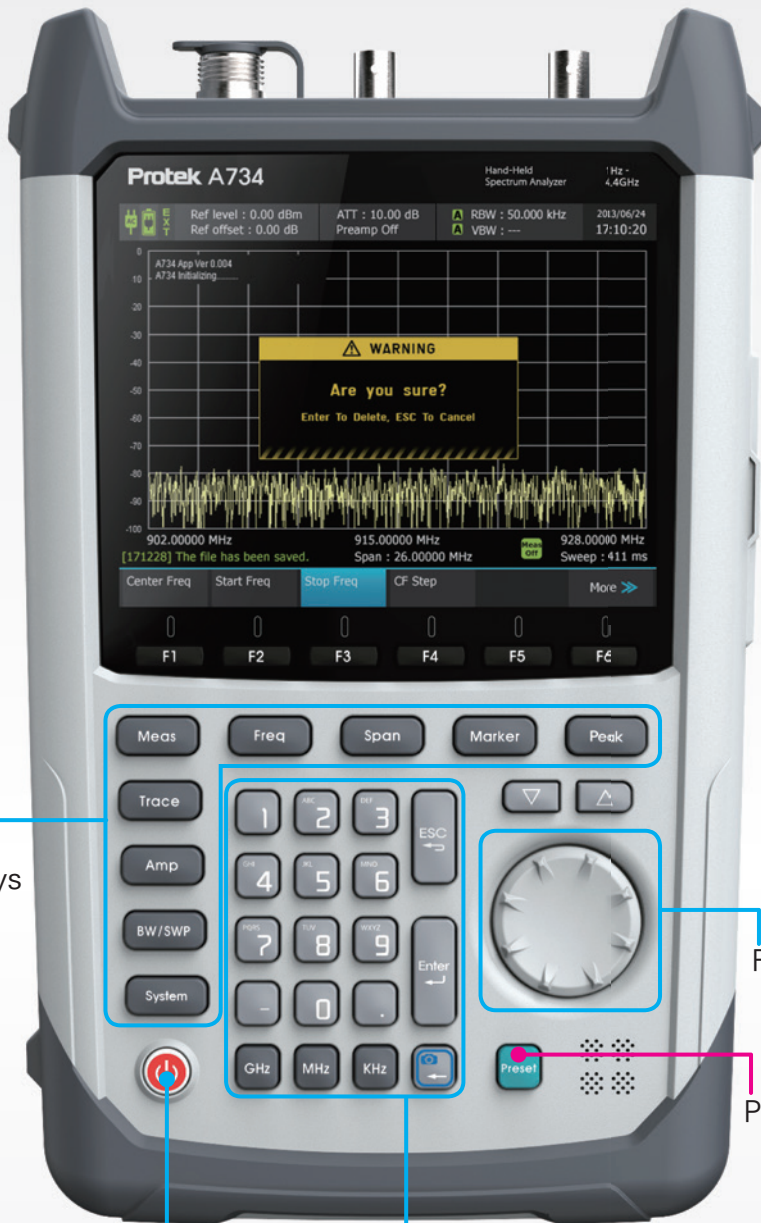
## General Information

- 1 Frequency Set Up
- 2 Span Adjustment(Full Span, Zerp Span)
- 3 Maker Setting
- 4 Screep Time
- 5 Channel Power
- 6 Llmit Test
- 7 Power Sensor
- 8 System





# Protek A734 4.4GHz Handheld Spectrum Analyzer



Function Keys

Rotary Knob

Preset Button

Power Button

Alphanumeric Key

▶ Side



Interface (USB, LAN)

▶ Front



Keypad with Knob

▶ Bottom



Smart Battery (8 hours)

# Protek A734 4.4GHz Handheld Spectrum Analyzer



Accessory(Optional)  
S134 (Terminating Power Sensor)



Accessory(Optional)  
C122R5 (Battery Charger)

## General Overview

A734 is Hand-Held type spectrum analyzer with a frequency range of 100 kHz to 4.4 GHz .

This equipment is suitable for signal analysis which can be used as frequency , digital information are more important these days.

A734 Hand-Held Spectrum Analyzer has been designed for use in the process of development, adjustment and testing of various electronic devices in industrial and laboratory facilities, including operation as a component of an automated measurement system. .

The equipment provide a variety of functions and user-friendly interface so user can operate for management and test about frequency and amplitude.

## Key Features

- Wide Frequency Range (100 kHz to 4.4GHz )
- 5.7 Inch TFT Color Sun-Light R LCD Readable LCD ( 640\*480 )
- Smart Battery management can be check Battery capability
- Battery Powered Operation for 8 Hour
- Key pad Back Light function
- Light weight (1.75Kg) increase portability



# Protek A734 4.4GHz Handheld Spectrum Analyzer

## Specifications

Item		Specification		
Frequency	Range	100 kHz to 4.4GHz		
	Span Mode	Center Freq + Span or Start Freq + Stop Freq ,ZERO Span		
	Span	ZERO SPAN , 600 Hz to 4.4GHz		
	Minimum Span	600 Hz		
	Internal Frequency Reference Accuracy	± 1PPM		
	Frequency Readout Accuracy	Reference error ± 1 sample		
	Marker Accuracy	Reference error ± 1 sample		
Amplitude	Measurement Range	DANL – 1dB Gain Compression		
		1dB Gain Compression(attenuator 15dB, preamp off)		
		+16dBm Typical, 1Hz to 150MHz		
		+19dBm Typical, 150MHz to 4.4GHz		
	DANL	Displayed Average Noise Level : 0dB ATT, 1Hz RBW		
		FREQ	Preamp OFF	Preamp ON
		10Hz	-124dBm	NA
		100Hz to 10kHz	-130dBm	NA
		10kHz to 500kHz	-142dBm	NA
		500kHz to 10MHz	-142dBm	-153dBm
		10MHz to 100MHz	-148dBm	-161dBm
		100MHz to 1GHz	-144dBm	-158dBm
		1GHz to 2.6GHz	-139dBm	-151dBm
	2.6GHz to 3.3GHz	-135dBm	-151dBm	
	3.3GHz to 4.4GHz	-128dBm	-134dBm	
	Amplitude unit	dBm, Watt		
	Absolute Accuracy (ref level < 0dBm)	± 1.5dB Typical		
Absolute Accuracy (0dBm< ref level < 10dBm)	± 1.5dB			
Relative Accuracy (ref level < 0dBm)	± 0.25			
Maximun Safe Input Level ( preamp off, 15dB att)	+20dBm			
DC Volt	±0.2V max			
Sweep	Zero Span Sweep Time	10 ms to 2 sec ( ±0.1% ) All other sweep times are estimates reported after sweep completes		
	Sweep Triger	freerun, single, external		
	External Trigger	3.3V CMOS/TTL input		
Display	TRACE	3 Trace		
	DETECTOR	min, max, sample , avg ( power , voltage , log )		
	Marker	5 Marker		
	Marker function	peak, next peak, center=marker frequency,		
	Audio Demodulation	AM & FM		
	Type	5.7" Color TFT-LCD 640*480 pixels		
	Display Resolution	640*480 pixels		
	Feature	SunLight Readable		
Input	KeyPad Back Light	ON/OFF		
	RF Connector	RF Signal IN, N type Female 50OHM		
	BNC External Timebase	10MHz in, BNC type Female		
General Spec	BNC Share	Self test, Sync out, Sweep Trigger IN, BNC type Female		
	Operating Environment	-10°C to +50°C < 95%		
	Humidity	< 95%		
	Storage Temperature	-20°C to +60°C		
Power	Battery	Li-ion Rechargeable Battery 6Cell(normal 7.4V / 7800mA)		
	Power Adaptor	AC Input	AC 100-240 V- ,50/60 Hz, 1.5A	
		DC Output	DC 12Vd.c. / 5.0A	
Dimension	Size	160(W) X 263(H) X 61(D) mm		
Weight		1.75 Kg (include battery)		
Other	Speaker	0.5W 8ohm Speaker 1Ch		
	AF out			
	Interface	Storage (USB port), LAN (RJ-45 Port)		
Environmental		For Indoor use		
		Altitude up to 2000m		
		Pollution Degree 2°		

